



ENGINEERED TO BE  
**FEARLESS**



# AEROSPACE INDUSTRY



## SIGNATURE SERIES DRILLS

### Features:

- 0.4 hp, 0.5 hp, 0.6 hp & 1 hp
- 1/4" – 1/2" Chuck Capacity
- Reversible Models Available
- Limited Rapid Reverse Models
- Keyless Chucks
- Trigger Start
- Rubber Grip
- Drop-In Motors – Ease of Service

Model Number	Chuck Capacity		Free Speed rpm	Weight		Length		Side To Center		Air Consumption		Spindle Thread
	in	mm		lb	kg	in	mm	in	mm	scfm	l/s	
<b>0.4 hp (0.30 kW) – Keyed Chuck</b>												
SDR4P22N2	1/4	6	2200	1.7	0.8	6.1	155	0.7	17	20	10	3/8"-24
SDR4P26N2	1/4	6	2600	1.6	0.7	5.5	140	0.7	17	20	10	3/8"-24
SDR4P26N3	3/8	10	2600	1.6	0.7	5.5	140	0.7	17	20	10	3/8"-24
SDR4P30N2	1/4	6	3000	1.6	0.7	5.5	140	0.7	17	20	10	3/8"-24
SDR4P36N2	1/4	6	3600	1.6	0.7	5.5	140	0.7	17	20	10	3/8"-24
SDR4P43N2	1/4	6	4300	1.6	0.7	5.5	140	0.7	17	20	10	3/8"-24
SDR4P50N2	1/4	6	5000	1.6	0.7	5.5	140	0.7	17	20	10	3/8"-24
SDR4P60N2	1/4	6	6000	1.6	0.7	5.5	140	0.7	17	20	10	3/8"-24
<b>0.4 hp (0.30 kW) – Precision Keyless Chuck</b>												
SDR4P26NK2	1/4	6	2600	2.0	0.9	6.1	155	0.7	17	20	10	3/8"-24
SDR4P30NK2	1/4	6	3000	2.0	0.9	6.1	155	0.7	17	20	10	3/8"-24
SDR4P36NK2	1/4	6	3600	2.0	0.9	6.7	171	0.7	17	20	10	3/8"-24
<b>0.5 hp (0.37 kW) – Keyed Chuck</b>												
SDR5P12N2	1/4	6	1200	1.7	0.8	6.1	155	0.7	17	30	14	3/8"-24
SDR5P26N2	1/4	6	2600	1.5	0.7	5.5	140	0.7	17	30	14	3/8"-24
SDR5P30N2	1/4	6	3000	1.5	0.7	5.5	140	0.7	17	30	14	3/8"-24
SDR5P36N2	1/4	6	3600	1.5	0.7	5.5	140	0.7	17	30	14	3/8"-24
SDR5P43N2	1/4	6	4300	1.5	0.7	5.5	140	0.7	17	30	14	3/8"-24
SDR5P50N2	1/4	6	5000	1.5	0.7	5.5	140	0.7	17	30	14	3/8"-24
SDR5P230N2	1/4	6	23000	1.3	0.6	4.8	120	0.7	17	30	14	3/8"-24
<b>0.60 hp (0.45 kW) – Keyed Chuck</b>												
SDR6P26N2	1/4	6	2600	2.1	0.95	5.8	145	0.8	20	25	12	3/8"-24
SDR6P26N3	3/8	10	2600	2.3	1.00	6.3	160	0.8	20	25	12	3/8"-24
SDR6P26N4	1/2	13	2600	2.7	1.20	6.6	170	0.8	20	25	12	1/2"-20
SDR6P40N2	1/4	6	4000	2.1	0.95	5.8	145	0.8	20	25	12	3/8"-24
SDR6P40N3	3/8	10	4000	2.3	1.00	6.3	160	0.8	20	25	12	3/8"-24
SDR6P60N2	1/4	6	6000	2.1	0.95	5.8	145	0.8	20	25	12	3/8"-24
SDR6P60N3	3/8	10	6000	2.3	1.00	6.3	160	0.8	20	25	12	3/8"-24
<b>0.60 hp (0.45 kW) – Precision Keyless Chuck</b>												
SDR6P7NK3	3/8	10	700	2.7	1.20	7.3	185	0.8	20	25	12	3/8"-24
SDR6P26NK3	3/8	10	2600	2.3	1.00	6.3	160	0.8	20	25	12	3/8"-24
SDR6P40NK3	3/8	10	4000	2.3	1.00	6.3	160	0.8	20	25	12	3/8"-24
SDR6P60NK3	3/8	10	6000	2.3	1.00	6.3	160	0.8	20	25	12	3/8"-24
<b>1 hp (0.75 kW) – Keyed Chuck</b>												
SDR10P26N2	1/4	6	2600	2.3	1.05	6.5	165	0.8	20	30	14	3/8"-24
SDR10P26N3	3/8	10	2600	2.5	1.10	7.0	180	0.8	20	30	14	3/8"-24
SDR10P26N4	1/2	13	2600	2.9	1.30	7.5	190	0.8	20	30	14	1/2"-20
SDR10P40N2	1/4	6	4000	2.3	1.05	6.5	165	0.8	20	30	14	3/8"-24
SDR10P40N3	3/8	10	4000	2.5	1.10	7.0	180	0.8	20	30	14	3/8"-24
SDR10P60N2	1/4	6	6000	2.3	1.05	6.5	165	0.8	20	30	14	3/8"-24
SDR10P60N3	3/8	10	6000	2.5	1.10	7.0	180	0.8	20	30	14	3/8"-24
SDR10P180N2	1/4	6	18000	1.85	0.84	5.5	140	0.8	20	30	14	3/8"-24
SDR10P210N2	1/4	6	21000	1.85	0.84	5.5	140	0.8	20	30	14	3/8"-24

CE



SDR4P36N2



SDR5P36N2



SDR6P26N3



SDR10P26NK3



SDR10P26N3

# SIGNATURE SERIES DRILLS

Model Number	Chuck Capacity		Free Speed	Weight		Length		Side To Center		Air Consumption		Spindle Thread
	in	mm	rpm	lb	kg	in	mm	in	mm	scfm	l/s	
<b>1 hp (0.75 kW) – Precision Keyless Chuck</b>												
SDR10P4NK4	1/2	13	400	3.1	1.40	7.8	200	0.8	20	30	14	1/2"-20
SDR10P7NK4	1/2	13	700	3.1	1.40	7.8	200	0.8	20	30	14	1/2"-20
SDR10P12NK3	3/8	10	1200	2.7	1.20	7.3	185	0.8	20	30	14	3/8"-24
SDR10P26NK3	3/8	10	2600	2.3	1.00	6.3	160	0.8	20	30	14	3/8"-24
SDR10P26NK4	1/2	13	2600	2.7	1.20	6.6	170	0.8	20	30	14	1/2"-20
SDR10P40NK3	3/8	10	4000	2.3	1.05	8.3	210	0.8	19	30	14	3/8"-24
SDR10P60NK3	3/8	10	6000	2.5	1.10	7.0	180	0.8	20	30	14	3/8"-24
<b>1 hp (0.75 kW) – Keyless Chuck</b>												
SDR10P26NL4	1/2	13	2600	2.7	1.20	6.7	171	0.8	20	30	14	1/2"-20

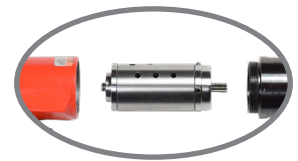
Air Inlet Size: 1/4" NPT • Recommended Hose Size: 3/8" (10 mm) • Performance rated @ 90 psig (6.2 bar) air pressure  
Parts List • Safety and Instruction Manual • 3-jaw Chuck and Key • Comfort Grip

**Please See Catalog For Full Listing**



**SDR10P26NL4**

**Drop-in Motors Available**



# SIGNATURE SERIES ANGLE DRILLS

## Features:

- Non-Reversible
- Lever Start
- 45° or 90° Miniature Angle Heads

Model Number	Free Speed	Weight		Length		Side to Center		Air Consumption		Spindle Internal Thread
	rpm	lb	kg	in	mm	in	mm	scfm	l/s	
<b>90° Standard Angle Head – 0.4 hp (0.30 kW)</b>										
SDR4A8S8L	800	2.1	0.94	10.0	255	0.7	20	21	10	1/4"-28
SDR4A20S8L	2000	1.9	0.87	9.5	240	0.7	20	21	10	1/4"-28
SDR4A27S8L	2700	1.9	0.87	9.5	240	0.7	20	21	10	1/4"-28
SDR4A33S8L	3300	1.9	0.87	9.5	240	0.7	20	21	10	1/4"-28
SDR4A44S8L	4400	1.9	0.87	9.5	240	0.7	20	21	10	1/4"-28
SDR4A55S8L	5500	1.9	0.87	9.5	240	0.7	20	21	10	1/4"-28
SDR4A27S9L	2700	1.9	0.87	9.5	240	0.7	20	21	10	9/32"-40
<b>90° Compact Angle Head – 0.4 hp (0.30 kW)</b>										
SDR4A28C8L	2800	1.9	0.84	9.5	240	0.7	20	21	10	1/4"-28
SDR4A35C8L	3500	1.9	0.84	9.5	240	0.7	20	21	10	1/4"-28
SDR4A47C8L	4700	1.9	0.84	9.5	240	0.7	20	21	10	1/4"-28
SDR4A57C8L	5700	1.9	0.84	9.5	240	0.7	20	21	10	1/4"-28
<b>90° Heavy Duty Angle Head – 0.4 hp (0.30 kW)</b>										
SDR4A8H8L	800	2.2	0.99	10.3	260	0.7	20	21	10	1/4"-28
SDR4A13H8L	1300	2.2	0.99	10.3	260	0.7	20	21	10	1/4"-28
SDR4A21H8L	2100	2.0	0.92	9.8	250	0.7	20	21	10	1/4"-28
SDR4A28H8L	2800	2.0	0.92	9.8	250	0.7	20	21	10	1/4"-28
SDR4A35H8L	3500	2.0	0.92	9.8	250	0.7	20	21	10	1/4"-28
<b>45° Angle Head – 0.4 hp (0.30 kW)</b>										
SDR4A8F8L	800	2.0	0.92	10.3	260	0.7	20	21	10	1/4"-28
SDR4A21F8L	2100	1.9	0.85	9.8	250	0.7	20	21	10	1/4"-28
SDR4A28F8L	2800	1.9	0.85	9.8	250	0.7	20	21	10	1/4"-28
SDR4A35F8L	3500	1.9	0.85	9.8	250	0.7	20	21	10	1/4"-28
SDR4A47F8L	4700	1.9	0.85	9.8	250	0.7	20	21	10	1/4"-28
SDR4A57F8L	5700	1.9	0.85	9.8	250	0.7	20	21	10	1/4"-28
SDR4A28F9L	2800	1.9	0.85	9.8	250	0.7	20	21	10	9/32"-40
<b>360° Swivel Head – 0.4 hp (0.30 kW)</b>										
SDR4A18T8L	1800	2.1	0.97	10.0	265	0.7	20	21	10	1/4"-28
SDR4A29T8L	2900	2.1	0.97	10.0	265	0.7	20	21	10	1/4"-28
SDR4A48T8L	4800	2.1	0.97	10.0	265	0.7	20	21	10	1/4"-28
<b>Sealant Removal Kit with 90° &amp; 45° Head – 0.4 hp (0.30 kW)</b>										
SDR4A8SF-SRK	800	2.1	0.94	10.0	255	0.7	20	21	10	1/4"-28
<b>Sealant Removal Kit with 45° Head – 0.4 hp (0.30 kW)</b>										
SDR4A8F-SRK	800	2.0	0.92	10.3	260	0.7	20	21	10	1/4"-28
<b>Sealant Removal Kit with 90° Head – 0.4 hp (0.30 kW)</b>										
SDR4A8S-SRK	800	2.1	0.94	10.0	255	0.7	20	21	10	1/4"-28

Air Inlet Size: 1/4" NPT • Recommended Hose Size: 3/8" (10 mm) • Performance rated @ 90 psig (6.2 bar) air pressure  
Parts List • Safety and Instruction Manual

**Please See Catalog For Additional Head Offerings & Dimensions**



**SDR4A33S8L**



**SDR4A35C8L**



**SDR4A13H8L**



**SDR4A28F8L**



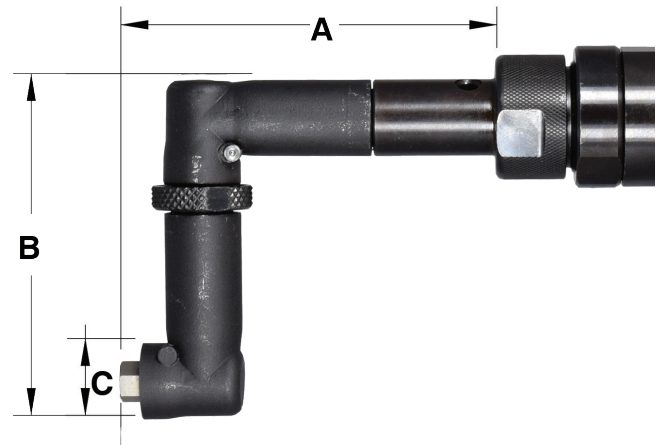
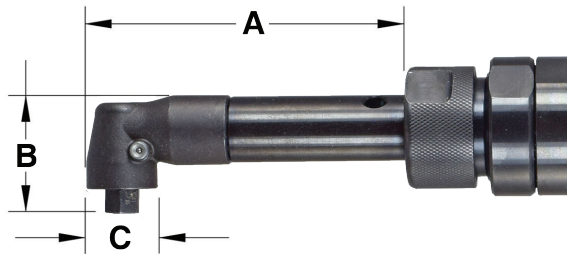
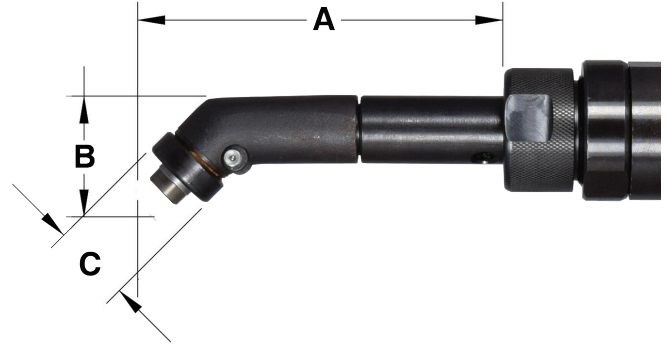
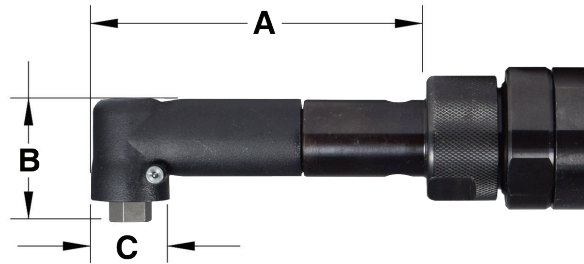
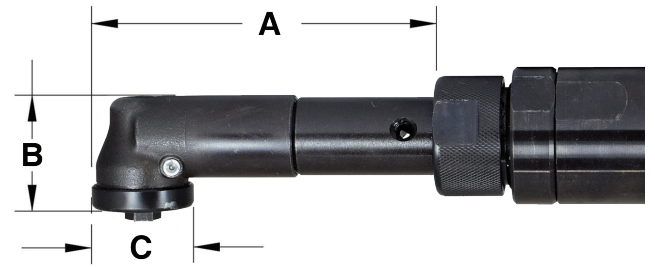
**SDR4A29T8L**



**SDR4A8SF-SRK**

**Head Dimensions (in.)**

Head Type	Accessory SKU	A	B	C
Standard 90°	SP75990	3.04	1.11	0.71
Compact 90°	SP76006	3.02	0.88	0.67
Heavy Duty 90°	SP76002	3.31	1.08	0.97
45°	SP75994	3.34	1.11	0.72
360°	SP76008	3.44	3.14	0.71



# RIVET SHAVERS

## Features:

- Pistol Grip & Inline



Model Number	Cutter Diameter		Free Speed rpm	Weight		Length		Side to Center		Air Consumption	
	in	mm		lb	kg	in	mm	in	mm	scfm	l/s
<b>0.6 hp (0.45 kW) – Pistol Grip – 1/4"-28 Internal Thread</b>											
SRS6P21-5	5/16	8	21000	2.0	0.9	6.5	165	0.8	21	25	12
SRS6P21-6	3/8	10	21000	2.0	0.9	6.5	165	0.8	21	25	12
SRS6P21-7	7/16	11	21000	2.0	0.9	6.5	165	0.8	21	25	12
SRS6P21-8	1/2	13	21000	2.0	0.9	6.5	165	0.8	21	25	12
SRS6P21-9	9/16	14	21000	2.0	0.9	6.5	165	0.8	21	25	12
SRS6P21-10	5/8	16	21000	2.0	0.9	6.5	165	0.8	21	25	12
SRS6P21-9W	9/16	14	21000	2.0	0.9	6.5	165	0.8	21	25	12
<b>1 hp (0.75 kW) – Pistol Grip – 1/4"-28 Internal Thread</b>											
SRS10P21-5	5/16	8	21000	2.7	1.2	8.0	205	0.9	23	25	12
SRS10P21-6	3/8	10	21000	2.7	1.2	8.0	205	0.9	23	25	12
SRS10P21-7	7/16	11	21000	2.7	1.2	8.0	205	0.9	23	25	12
SRS10P21-8	1/2	13	21000	2.7	1.2	8.0	205	0.9	23	25	12
SRS10P21-9	9/16	14	21000	2.7	1.2	8.0	205	0.9	23	25	12
SRS10P21-10	5/8	16	21000	2.7	1.2	8.0	205	0.9	23	25	12
<b>1 hp (0.75 kW) – Inline – 1/4"-28 Internal Thread</b>											
SRS10S21-8	1/2	13	21000	2.5	1.1	10.0	255	0.9	23	30	14

Air Inlet Size: 1/4" NPT • Recommended Hose Size: 3/8" (10 mm) • Performance rated @ 90 psig (6.2 bar) air pressure  
Parts List • Safety and Instruction Manual • Skirt • Comfort Grip (Pistol Grip models) Stabilizer (SRS10P) • Cutters Not Included



SRS6P21-8



SRS10P21-8



SRS10S21-8

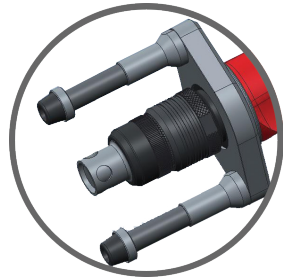
# RIVET SHAVER SKIRTS AND STABILIZER

Part Number	Cutter Diameter	
	in	mm
2925-5	5/16	8
2925-6	3/8	10
2925-7	7/16	11
2925-8B	1/2	13
2925-9	9/16	14
2925-9W	9/16	14
2925-10	5/8	16



3/4-16 Thread

2925-8B



74274A

Part Number	For Use On
74274A	SRS6P21 series

# SHIUX SWIVEL



1338-25



1338FC-25

Allows the air hose to rotate 360° on 2 axes.

Part Number	Description
1338-25	1/4" non-regulated air swivel connector with safety pin
1338-38	3/8" non-regulated air swivel connector with safety pin
1338-50	1/2" non-regulated air swivel connector with safety pin
1338FC-25	1/4" regulated air swivel connector with safety pin

# RIVET SHAVER KIT

- Includes:
- SRS6P21 Tool
  - 74274A Stabilizer
  - 5 Skirts:
    - 2925-5 5/16
    - 2925-6 3/8
    - 2925-7 7/16
    - 2925-8B 1/2
    - 2925-10 5/8

Model Number	Cutter Diameter		Free Speed rpm	Tool Weight		Tool Length		Side to Center		Maximum Air Consumption	
	in	mm		lb	kg	in	mm	in	mm	scfm	l/s
SRS6P21-K	3/8	10	21,000	2.0	0.9	6.5	165	0.8	21	25	12



# SRS6P21-K



# ROUTERS

SRT10S25N



SRT10S25BB

SRT10S25B



SRT10S25LT



**Features:**

- Lockoff Lever Throttle
- Front Exhaust
- Interchangeable Base
- Built-in Speed Control

Model Number	Collet Size	Free Speed	Weight		Height		Air Consumption	
		rpm	lb	kg	in	mm	scfm	l/s
<b>Template Nose*</b>								
SRT10S18N	1/4	18000	2.1	0.95	9.0	230	30	14
SRT10S18M6N	6 mm	18000	2.1	0.95	9.0	230	30	14
SRT10S25N	1/4	25000	2.1	0.95	9.0	230	30	14
SRT10S25M6N	6 mm	25000	2.1	0.95	9.0	230	30	14
<b>3" Base</b>								
SRT10S18B	1/4	18000	2.1	0.95	9.0	230	30	14
SRT10S18M6B	6 mm	18000	2.1	0.95	9.0	230	30	14
SRT10S18BB	1/4	18000	2.6	1.15	8.3	210	30	14
SRT10S25B	1/4	25000	2.1	0.95	9.0	230	30	14
SRT10S25M6B	6 mm	25000	2.1	0.95	9.0	230	30	14
SRT10S25BB	1/4	25000	2.6	1.15	8.3	210	30	14
<b>Laminate Trimmer</b>								
SRT10S18LT	1/4	18000	2.9	1.30	9.3	235	30	14
SRT10S25LT	1/4	25000	2.9	1.30	9.3	235	30	14

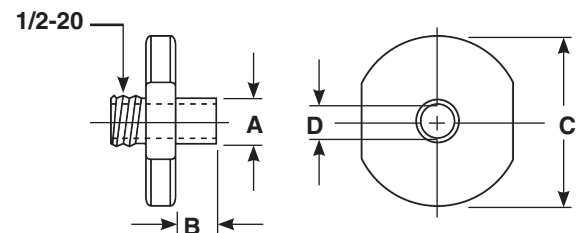


\*Template guides must be ordered separately, page 82

Air Inlet Size: 1/4" NPT • Recommended Hose Size: 3/8" (10 mm) • Performance rated @ 90 psig (6.2 bar) air pressure  
 Parts List • Safety and Instruction Manual • Base/Head Assembly, Collet, Collet Wrenches

## Template Guide Chart

Part Number	Dimensions in Inches			
	A Pilot OD	B Pilot Length	C Flange OD	D Pilot ID
68613-12	3/8	1/4	3/4	9/32
68613-14	3/8	3/8	3/4	9/32
68613-16	3/8	1/2	3/4	9/32
68613-22	3/8	1/8	1-1/2	9/32
68613-24	3/8	1/4	1-1/2	9/32
68613-26	3/8	3/8	1-1/2	9/32
68613-40	7/16	1/4	3/4	21/64
68613-42	7/16	3/8	3/4	21/64
68613-44	7/16	1/2	1-1/2	21/64
68613-48	7/16	1/4	1-1/2	21/64
68613-50	7/16	3/8	1-1/2	21/64
68613-52	7/16	1/2	1-1/2	21/64
68613-62	1/2	1/4	1-1/2	11/32
68613-64	1/2	3/8	1-1/2	11/32
68613-66	1/2	1/2	1-1/2	11/32
68613-72	1/2	1/2	2-1/2	11/32
68613-88	5/8	1.0	3/4	5/16



# SKIN CLAMP RUNNERS



For up to 1/4" Hex Body Fastener



For up to 1/4" Cylindrical Body Fastener



SSR4P26



SSR6P25



**Features:**

- Hex: 1/2" Internal; 9/16" External

Model Number	Fastener Type	Free Speed	Weight		Length		Side to Center		Air Consumption	
		rpm	lb	kg	in	mm	in	mm	scfm	l/s
<b>0.24 hp (0.18 kW) – Pistol Grip</b>										
SSR4P26	Cylindrical	2600	1.7	0.7	7.0	178	0.7	17	20	10
<b>0.40 hp (0.30 kW) – Pistol Grip</b>										
SSR6P25	Hex	2500	2.7	1.2	9.2	234	0.9	23	30	14

Air Inlet Size: 1/4" NPT • Recommended Hose Size: 3/8" (10 mm) • Performance rated @ 90 psig (6.2 bar) air pressure  
 Parts List • Safety and Instruction Manual • Comfort Grip (Pistol Grip models)

# STRAIGHT DIE GRINDERS

**Features:**

- Lockoff Lever
- Front or Rear Exhaust
- Built-in Speed Control



Model Number	Free Speed	Weight		Length		Air Consumption		Collet Size	Exhaust
	rpm	lb	kg	in	mm	scfm	l/s		
<b>0.3 hp (0.22 kW) – Lever Throttle – 200 Series Collet</b>									
SDG03S25	25000	1.0	0.45	6.25	160	11	5.2	1/4"	Rear
<b>0.3 hp (0.22 kW) – Lever Throttle – 300 Series Collet</b>									
SDG03S25S	25000	1.0	0.45	6.25	160	11	5.2	1/4"	Rear
<b>0.5 hp (0.37 kW) – Lever Throttle – 200 Series Collet</b>									
SDG05S18	18000	1.2	0.54	7.0	180	23	10.9	1/4"	Rear
SDG05S23	23000	1.2	0.54	7.0	180	23	10.9	1/4"	Rear
<b>0.5 hp (0.37 kW) – Lever Throttle – 300 Series Collet</b>									
SDG05S18S	18000	1.2	0.54	7.0	180	23	10.9	1/4"	Rear
SDG05S23S	23000	1.2	0.54	7.0	180	23	10.9	1/4"	Rear



SDG03S25



SDG05S23

Air Inlet Size: 1/4" NPT • Recommended Hose Size: 3/8" (10 mm) • Performance rated @ 90 psig (6.2 bar) air pressure  
 Parts List • Safety and Instruction Manual • Collet & Wrenches

*Please See Catalog For Full Listing*

# EXTENDED DIE GRINDERS

**Features:**

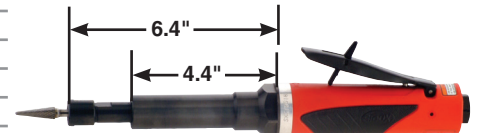
- Heavy duty double tapered collet
- Ergonomic comfort grip
- Teasing throttle for maximum control
- Lever throttle with lock-off
- Ball bearing construction
- Adjustable speed control



Model Number	Free Speed	Weight		Length		Air Consumption		Collet Size	Exhaust
	rpm	lb	kg	in	mm	scfm	l/s		
<b>0.5 hp (0.37 kW) – Lever Throttle – Extended – 200 Series Collet</b>									
SXG05S18	18000	2.1	0.95	11.0	280	23	10.9	1/4"	Rear
SXG05S23	23000	2.1	0.95	11.0	280	23	10.9	1/4"	Rear
<b>0.5 hp (0.37 kW) – Lever Throttle – Extended – 300 Series Collet</b>									
SXG05S18S	18000	2.1	0.95	11.0	280	23	10.9	1/4"	Rear
SXG05S23S	23000	2.1	0.95	11.0	280	23	10.9	1/4"	Rear
<b>1 hp (0.75 kW) – Lever Throttle – Extended – 200 Series Collet</b>									
STXG10S12	12000	2.2	1.0	12.1	308	30	14	1/4"	Rear
STXG10S18	18000	2.2	1.0	12.1	308	30	14	1/4"	Rear
STXG10S23	23000	2.2	1.0	12.1	308	30	14	1/4"	Rear
<b>1 hp (0.75 kW) – Lever Throttle – Extended – Cone Wheel</b>									
STXG10S18CW	18000	2.2	1.0	12.2	310	30	14	3/8"-24 EXT Thread	Rear



SXG05S23



STXG10S23

Air Inlet Size: 1/4" NPT • Recommended Hose Size: 3/8" (10 mm) • Performance rated @ 90 psig (6.2 bar) air pressure  
 Parts List • Safety and Instruction Manual • Collet & Wrenches

# RIGHT ANGLE DIE GRINDERS



**Features:**

- Spiral Bevel Gears
- Steel Angle Head
- Built-in Speed Control



Model Number	Free Speed		Weight		Length		Air Consumption		Collet Size	Exhaust
	rpm		lb	kg	in	mm	scfm	l/s		
<b>0.3 hp (0.22 kW) – Lever Throttle – 200 Series Collet</b>										
SAG03S12	12000		1.4	0.6	5.6	140	11	5.2	1/4"	Rear
SAG03S20	20000		1.4	0.6	5.6	140	11	5.2	1/4"	Rear
<b>0.3 hp (0.22 kW) – Lever Throttle – 300 Series Collet</b>										
SAG03S12S	12000		1.35	0.45	5.6	143	11	5.2	1/4"	Rear
SAG03S20S	20000		1.35	0.45	5.6	143	11	5.2	1/4"	Rear
<b>0.5 hp (0.37 kW) – Lever Throttle – 200 Series Collet</b>										
SAG05S33	3300		2.2	1.0	8.2	208	23	11	1/4"	Rear
SAG05S54	5400		2.2	1.0	8.2	208	23	11	1/4"	Rear
SAG05S12	12000		1.7	0.77	6.9	175	23	11	1/4"	Rear
SAG05S15	15000		1.7	0.77	6.9	175	23	11	1/4"	Rear
SAG05S18	18000		1.7	0.77	6.9	175	23	11	1/4"	Rear
SAG05S23	23000		1.6	0.64	6.4	160	23	10.8	1/4"	Rear
<b>0.5 hp (0.37 kW) – Lever Throttle – 300 Series Collet</b>										
SAG05S12S	12000		1.65	0.77	6.9	175	23	11	1/4"	Rear
SAG05S15S	15000		1.65	0.77	6.9	175	23	11	1/4"	Rear
SAG05S18S	18000		1.65	0.77	6.9	175	23	11	1/4"	Rear
SAG05S23S	23000		1.55	0.61	6.4	162	23	10.8	1/4"	Rear

Air Inlet Size: 1/4" NPT • Recommended Hose Size: 3/8" (10 mm) • Performance rated @ 90 psig (6.2 bar) air pressure  
 Parts List • Safety and Instruction Manual • Collet & Wrenches

# LOW SPEED RIGHT ANGLE SANDERS

**Features:**

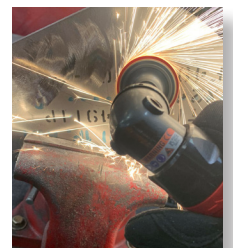
- 0.5 hp
- 1/4" Collet
- Robust Planetary Gears
- Drop-in Motor - Ease of Service



**Low Spark Titanium Sanding Example**

**3300 RPM**

**12000 RPM**



Model Number	Free Speed		Weight		Length		Air Consumption		Collet Size	Exhaust
	rpm		lb	kg	in	mm	scfm	l/s		
<b>0.5 hp (0.37 kW) – Lever Throttle – 200 Series Collet</b>										
SAG05S33	3300		2.2	1.0	8.2	208	23	11	1/4"	Rear
SAG05S54	5400		2.2	1.0	8.2	208	23	11	1/4"	Rear

Air Inlet Size: 1/4" NPT • Recommended Hose Size: 3/8" (10 mm) • Performance rated @ 90 psig (6.2 bar) air pressure

## RIGHT ANGLE SANDERS



SAS03S122-20



SAS05S122-20



SAS10AXL15



SAS03X202-20



SAS05S232-20

### Features:

- Lockoff Lever Throttle
- Rear Exhaust
- Comfort Grip



Model Number	Free Speed	Weight		Length		Air Consumption		Spindle Thread
	rpm	lb	kg	in	mm	scfm	l/s	
<b>0.3 hp (0.22 kW) – 1/4"-20 Internal Thread</b>								
SAS03S122-20	12000	1.1	0.5	5.6	143	11	5.2	1/4"-20
SAS03S202-20	20000	1.1	0.5	5.6	143	11	5.2	1/4"-20
<b>0.3 hp (0.22 kW) – EXTENDED</b>								
SAS03X122-20	12000	2.0	0.9	9.5	240	11	5.2	2.1
SAS03X202-20	20000	2.0	0.9	9.5	240	11	5.2	2.1
<b>0.5 hp (0.37 kW) – 1/4"-20 Internal Thread</b>								
SAS05S122-20	12000	1.6	0.73	6.9	175	23	11	1/4"-20
SAS05S152-20	15000	1.6	0.73	6.9	175	23	11	1/4"-20
SAS05S182-20	18000	1.6	0.73	6.9	175	23	11	1/4"-20
SAS05S232-20	23000	1.5	0.59	6.4	143	23	11	1/4"-20
<b>1 hp (0.75 kW) – 1/4"-20 Internal Thread</b>								
SAS10A122-20	12000	2.15	0.98	7.5	190	30	14	1/4"-20
SAS10A152-20	15000	2.15	0.98	7.5	190	30	14	1/4"-20
SAS10A182-20	18000	2.15	0.98	7.5	190	30	14	1/4"-20
<b>1 hp (0.75 kW) – EXTENDED</b>								
SAS10AXL15	15000	3.2	1.50	11.3	285	30	14	1.9

Air Inlet Size: 1/4" NPT • Recommended Hose Size: 3/8" (10 mm) • Performance rated @ 90 psig (6.2 bar) air pressure  
 Parts List • Safety and Instruction Manual • Support Handle (1 hp Models) • Spindle Wrenches • 1/4"-20 Threaded Arbor

## BELT SANDER

Model Number	Belt Speed	Spindle Speed	Weight		Length		Air Consumption		Exhaust
	sfpm	rpm	lb	kg	in	mm	cfm	l/s	
<b>0.5 hp (0.37 kW)</b>									
SBS05S12	2700	12000	2.8	1.3	14.2	360	23	11	Rear
SBS05S18	4100	18000	2.8	1.3	14.2	360	23	11	Rear

Air Inlet Size: 1/4" NPT • Recommended Hose Size: 3/8" (10 mm) • Performance rated @ 90 psig (6.2 bar) air pressure  
 Parts List • Safety & Instruction Manual • 571-618F contact arm • Hex key for head positioning



SBS05S18

## PISTOL GRIP SANDERS

### Features:

- Trigger Start
- Down-Handle Exhaust
- Comfort Grip

Model Number	Free Speed	Weight		Length		Air Consumption		Output
	rpm	lb	kg	in	mm	scfm	l/s	
<b>0.7 hp (0.52 kW) – Sanding Discs with 7/8" Hole</b>								
SPS07P123-24	12000	2.1	1.0	5.3	135	25	12	3/8"-24 thread
SPS07P125-11	12000	2.0	0.9	5.8	145	25	12	5/8"-11 thread

Air Inlet Size: 1/4" NPT • Recommended Hose Size: 3/8" (10 mm) • Performance rated @ 90 psig (6.2 bar) air pressure  
 Parts List • Safety and Instruction Manual • Comfort Grip • Backing Pad



SPS07P125-11



# RANDOM ORBITAL SANDERS



RO2512-50SRP



RO2512-50SNP



RO2512-50FVP

**Features:**

- 3/16" (5 mm) & 3/8" (10 mm) Orbit Diameters
- Built-in Speed Control
- Ergonomic 24-Position Indexable Grip
- Non-Vacuum, Venturi Vacuum & Remote Vacuum



Model Number		Free Speed rpm	Pad Size		Orbit Diameter		Weight		Height		Air Consumption	
PSA Pad	H & L Pad		in	mm	in	mm	lb	kg	in	mm	scfm	l/s
<b>0.25 hp (0.19 kW) – 5/16"-24 Spindle Thread – Non-Vacuum</b>												
RO2512-50FNP	RO2512-50FNH	12000	5.0	125	3/32	3	1.5	0.7	3.3	83	13	6
RO2512-50SNP	RO2512-50SNH	12000	5.0	125	3/16	5	1.5	0.7	3.3	83	13	6
RO2512-50CNP	RO2512-50CNH	12000	5.0	125	3/8	10	1.5	0.7	3.3	83	13	6
RO2512-60FNP	RO2512-60FNH	12000	6.0	150	3/32	3	1.5	0.7	3.3	83	13	6
RO2512-60SNP	RO2512-60SNH	12000	6.0	150	3/16	5	1.5	0.7	3.3	83	13	6
RO2512-60CNP	RO2512-60CNH	12000	6.0	150	3/8	10	1.5	0.7	3.3	83	13	6
<b>0.25 hp (0.19 kW) – 5/16"-24 Spindle Thread – Remote Vacuum Ready</b>												
RO2512-50FRP	RO2512-50FRH	12000	5.0	125	3/32	3	1.5	0.7	3.3	83	13	6
RO2512-50SRP	RO2512-50SRH	12000	5.0	125	3/16	5	1.5	0.7	3.3	83	13	6
RO2512-50CRP	RO2512-50CRH	12000	5.0	125	3/8	10	1.5	0.7	3.3	83	13	6
RO2512-60FRP	RO2512-60FRH	12000	6.0	150	3/32	3	1.5	0.7	3.3	83	13	6
RO2512-60SRP	RO2512-60SRH	12000	6.0	150	3/16	5	1.5	0.7	3.3	83	13	6
RO2512-60CRP	RO2512-60CRH	12000	6.0	150	3/8	10	1.5	0.7	3.3	83	13	6
<b>0.25 hp (0.19 kW) – 5/16"-24 Spindle Thread – Self-contained Venturi Vacuum</b>												
RO2512-50FVP	RO2512-50FVH	12000	5.0	125	3/32	3	1.5	0.7	3.3	83	13	6
RO2512-50SVP	RO2512-50SVH	12000	5.0	125	3/16	5	1.5	0.7	3.3	83	13	6
RO2512-50CVP	RO2512-50CVH	12000	5.0	125	3/8	10	1.5	0.7	3.3	83	13	6
RO2512-60FVP	RO2512-60FVH	12000	6.0	150	3/32	3	1.5	0.7	3.3	83	13	6
RO2512-60SVP	RO2512-60SVH	12000	6.0	150	3/16	5	1.5	0.7	3.3	83	13	6
RO2512-60CVP	RO2512-60CVH	12000	6.0	150	3/8	10	1.5	0.7	3.3	83	13	6

Air Inlet Size: 1/4" NPT • Recommended Hose Size: 3/8" (10 mm) • Performance rated @ 90 psig (6.2 bar) air pressure  
 Parts List • Safety and Instruction Manual • Comfort Grip • Backing Pad & Wrench



# ORBITAL JITTERBUG SANDER



RO2510-44FNC

**Features:**

- Built-in Speed Control
- Ergonomic 24-Position Indexable Grip



Model Number	Paper Size		Orbit Diameter		Weight		Height		Air Consumption	
	in	mm	in	mm	lb	kg	in	mm	scfm	l/s
<b>0.25 hp (0.19 kW)</b>										
RO2510-44FNC	3-3/4 x 4-1/4	95 x 105	3/32	3	1.8	0.8	3.5	90	13	6

Air Inlet Size: 1/4" NPT • Recommended Hose Size: 3/8" (10 mm) • Performance rated @ 90 psig (6.2 bar) air pressure  
 Parts List • Safety and Instruction Manual

# GEARED ORBITAL SANDERS



GO459-60SNP



GO459-80SRP

**Features:**

- 3/16" (5 mm) Orbit Diameter
- Built-in Speed Control
- Vacuum & Remote Vacuum
- Ergonomic 24-Position Indexable Grip

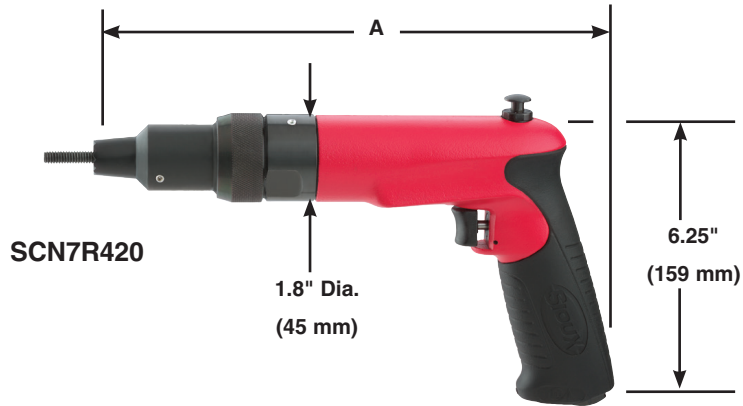


Model Number		Free Speed	Pad Size		Weight		Height		Air Consumption	
PSA Pad	H & L Pad	rpm	in	mm	lb	kg	in	mm	scfm	l/s
<b>0.45 hp (0.34 kW) Non-Vacuum</b>										
GO459-60SNP	GO459-60SNH	900	6.0	150	4.4	2.0	5.0	127	15	7
GO459-80SNP	GO459-80SNH	900	8.0	200	4.4	2.0	5.0	127	15	7
<b>0.45 hp (0.34 kW) Remote Vacuum</b>										
GO459-60SRP	GO459-60SRH	900	6.0	150	4.4	2.0	5.0	127	15	7
GO459-80SRP	GO459-80SRH	900	8.0	200	4.4	2.0	5.0	127	15	7

Air Inlet Size: 1/4" NPT • Recommended Hose Size: 3/8" (10 mm) • Performance rated @ 90 psig (6.2 bar) air pressure  
 Parts List • Safety and Instruction Manual

# CLINCH NUT TOOLS

Common power unit & nose combinations are available as a complete tool. See price list for current offering. Example complete tool; 700 rpm power unit & 1/4-20 clinch-nut with serrated-nose would be item number SCN7R420.



SCN7R420

**Features:**

- Reversible
- Pistol Grip



Model Number	Free Speed	Maximum Torque		Weight		"A" Dimension		Side To Center		Air Consumption	
	rpm	in lb	Nm	lb	kg	in	mm	in	mm	scfm	l/s
<b>Pistol Grip – Rapid Reverse – Power Unit Only Specifications</b>											
SCN3R	300	400	45.2	3.2	1.5	11	279	0.9	20	30	14
SCN5R	500	325	36.7	3.2	1.5	11	279	0.9	20	30	14
SCN7R	700	220	24.8	3.2	1.5	11	279	0.9	20	30	14
SCN12R	1200	145	16.4	3.2	1.5	11	279	0.9	20	30	14
SCN20R	2000	80	9.0	2.8	1.3	10	254	0.9	20	30	14
SCN25R	2500	60	6.5	2.8	1.3	10	254	0.9	20	30	14

Air Inlet Size: 1/4" NPT • Recommended Hose Size: 3/8" (10 mm) • Performance rated @ 90 psig (6.2 bar) air pressure  
 Parts List • Safety and Instruction Manual • Comfort Grip



## Front End Attachments

### Clinch Nut



Thread Size	Order Number Suffix	
	Serrated Nose	Smooth Nose
SCN-#4-40	SCN-440	SCN-440S
SCN-#6-32	SCN-632	SCN-632S
SCN-#8-32	SCN-832	SCN-832S
SCN-#10-24	SCN-1024	SCN-1024S
SCN-#10-32	SCN-1032	SCN-1032S
SCN-1/4-20	SCN-420	SCN-420S
SCN-5/16-18	SCN-518	SCN-518S
SCN-3/8-16	SCN-616	SCN-616S
SCN-M3 x 0.5	SCN-M305	SCN-M305S
SCN-M4 x 0.7	SCN-M407	SCN-M407S
SCN-M5 x 0.8	SCN-M508	SCN-M508S
SCN-M6 x 1.0	SCN-M610	SCN-M610S
SCN-M8 x 1.25	SCN-M8125	SCN-M8125S
SCN-M10 x 1.5	SCN-M1015	SCN-M1015S

### Clinch Stud



Thread Size	Order Number Suffix	
	Serrated Nose	Smooth Nose
SCN-#4-40	SCN-440F	SCN-440SF
SCN-#6-32	SCN-632F	SCN-632SF
SCN-#8-32	SCN-832F	SCN-832SF
SCN-#10-24	SCN-1024F	SCN-1024SF
SCN-#10-32	SCN-1032F	SCN-1032SF
SCN-1/4-20	SCN-420F	SCN-420SF
SCN-5/16-18	SCN-518F	SCN-518SF
SCN-3/8-16	SCN-616F	SCN-616SF
SCN-M3 x 0.5	SCN-M305F	SCN-M305SF
SCN-M4 x 0.7	SCN-M407F	SCN-M407SF
SCN-M5 x 0.8	SCN-M508F	SCN-M508SF
SCN-M6 x 1.0	SCN-M610F	SCN-M610SF
SCN-M8 x 1.25	SCN-M8125F	SCN-M8125SF
SCN-M10 x 1.5	SCN-M1015F	SCN-M1015SF

# RIVET HAMMERS



270A



270A-4

**Features:**

- Pistol Grip
- Teasing Throttle Trigger Start
- Accepts .401 Parker Taper Rivet
- Sets and Chisels

Model Number	Steel Rivet Capacity		Stroke Length		Bore Diameter		Blows per Minute	Weight		Length		Side To Center		Air Consumption	
	in	mm	in	mm	in	mm		lb	kg	in	mm	in	mm	scfm	l/s
270A-2	5/32	4.0	2.0	50	9/16	14.3	2500	3.0	1.4	5.8	147	1.1	28	8	4
270A	3/16	4.8	3.0	75	9/16	14.3	2000	3.2	1.5	6.8	173	1.1	28	8	4
270A-4	1/4	6.4	4.0	100	9/16	14.3	1700	3.5	1.6	7.8	198	1.1	28	8	4

Air Inlet Size: 1/4" NPT • Recommended Hose Size: 3/8" (10 mm) • Performance rated @ 90 psig (6.2 bar) air pressure  
 Parts List • Safety and Instruction Manual • Beehive Retainer



# ATI RIVET HAMMERS

**RIVET HAMMERS**

- Aluminum offset pistol grip
- Teasing trigger for precise control
- Includes air flow valve, beehive spring, and quick-release retainer spring

Part Number	Aluminum Rivet Capacity	Steel Rivet Capacity	BPM	Length	Weight	Shank Diameter
ATIU-2X	5/32"	3/32"	2580	6-1/2"	2.25 lbs.	.401
ATIATC3X	3/16"	5/32"	2160	7-1/4"	2.25 lbs.	.401
ATIATC4X	1/4"	3/16"	1740	8-1/4"	2.75 lbs.	.401



ATIATC3X



ATIATC4X

# RETAINER SPRINGS

**ATI114C-3 QUICK RELEASE**

- Fast thumb release to quickly change rivet sets
- Works with any 3x or 4x rivet hammer
- Accommodates 1/2" or 9/16" body diameter rivet sets



**ATI115 BEEHIVE TYPE**

Fixed type retainer spring for maximum safety.

ATI115A	For 1/2" body diameter rivet sets
ATI115B	For 5/8" body diameter rivet sets



**BEEHIVE SPRING RETAINERS**

Part Number	Description
2207	Chisel Retainer Spring (Use with all except those listed below)
2208	Must use 2208 with 2201B, 2205, 2216, 2217B, and 2219, 2220, 2239, 2244, 2245, 2246, 2247



2207



2208

# COMPRESSION RIVETERS

## Features:

- Single, Tandem, and Triple Cylinder Options
- Riveting Capacity:
  - 1/8" (3 mm) (Single Cylinder)
  - 3/16" (5 mm) (Tandem Cylinder)
  - 1/4" (6 mm) (Triple Cylinder)
- Safety Throttle



SZEAE5030



SZEAE7030



SZEAE9030

Model Number	Rivet Set Shank Diameter		Cap Cold Rivet Diameter				Standard Alligator Yoke Dimension				Max Force at 90 psi		Moving Jaw				Net Weight w/ Yoke		Overall Length	
			Steel		Alum		Reach		Closed Ht				Max Travel		Stroke at Max Force					
	in	mm	in	mm	in	mm	in	mm	in	mm	in	mm	in	mm	in	mm	lb	kg	in	mm

### CR-1 – Single Cylinder

SZEAE5000	NA	NA	3/32	2	1/8	3	NA	NA	NA	NA	3000	13.4	5/8	16	final 1/16	2	2-1/4	1.0	7-11/16	195
SZEAE5015	3/16	5	3/32	2	1/8	3	1-1/2	38	7/8	22	3000	13.4	5/8	16	final 1/16	2	3.75	1.7	9-3/16	233
SZEAE5022	3/16	5	3/32	2	3/32	2	2-1/4	57	7/8	22	2200	9.8	7/8	22	final 3/32	2	4.25	1.9	10-1/8	257
SZEAE5030	3/16	5	3/32	2	3/32	2	3	76	7/8	22	1800	8.0	1-1/4	32	final 1/8	3	4.75	2.2	10-7/8	276

### CR-1 – Tandem Cylinder

SZEAE7000	NA	NA	5/32	4	3/16	5	NA	NA	NA	NA	6000	26.7	5/8	16	final 1/16	2	4.0	1.8	10-1/2	267
SZEAE7015	3/16	5	5/32	4	3/16	5	1-1/2	38	7/8	22	6000	26.7	5/8	16	final 1/16	2	5.5	2.5	12	305
SZEAE7022	3/16	5	1/8	3	5/32	4	2-1/4	57	7/8	22	4300	19.1	7/8	22	final 3/32	2	6.0	2.7	13	330
SZEAE7030	3/16	5	3/32	2	1/8	3	3	76	7/8	22	3400	15.1	1-1/4	32	final 1/8	3	6.25	2.8	13.75	349

### CR-1 – Triple Cylinder

SZEAE9000	NA	NA	3/16	5	1/4	6	NA	NA	NA	NA	9000	40.1	5/8	16	final 1/16	2	5.5	2.5	14.5	368
SZEAE9015	3/16	5	3/16	5	1/4	6	1-1/2	38	7/8	22	9000	40.1	5/8	16	final 1/16	2	7.0	3.2	16	406
SZEAE9022	3/16	5	5/32	4	3/16	5	2-1/4	57	7/8	22	7000	31.2	7/8	22	final 3/32	2	7.5	93.4	16.75	426
SZEAE9030	3/16	5	5/32	4	3/16	5	3	76	7/8	22	5200	23.1	1-1/4	32	final 1/8	3	8.0	3.6	17.5	445

Air Inlet Size: 1/4" NPT • Recommended Hose Size: 3/8" (10 mm) • Performance rated @ 90 psig (6.2 bar) air pressure  
 Parts List • Safety and Instruction Manual • Safety throttle action



SZEAE3015



SZEAE6015



SZEAE8015

Model Number	Rivet Set Shank Diameter		Cap Cold Rivet Diameter				Standard "C" Yoke Dimension				Closed Height		Max Travel		Max Force at 90 psi		Stroke at Max Force		Net Weight w/ Yoke		Overall Length	
			Steel		Alum		Reach		Gap													
	in	mm	in	mm	in	mm	in	mm	in	mm	in	mm	in	mm	lb	kN	in	mm	lb	kg	in	mm

### CR-1 – Single Cylinder

SZEAE3000	N/A	N/A	3/32	2	1/8	3	N/A	N/A	N/A	N/A	N/A	N/A	9/16	14	3000	13.4	f-1/16	2	3-1/2	1.6	8-1/2	216
SZEAE3015	3/16	5	3/32	2	1/8	3	1-1/2	38	1-1/4	32	11/16	78	9/16	14	3000	13.4	f-1/16	2	4-1/2	2	10-1/4	262

### CR-1 – Tandem Cylinder

SZEAE6000	N/A	N/A	5/32	4	3/16	5	N/A	N/A	N/A	N/A	N/A	N/A	9/16	14	6000	26.7	f-1/16	2	4-1/2	2	11-1/4	287
SZEAE6015	3/16	5	5/32	4	3/16	5	1-1/2	38	1-1/4	32	11/16	78	9/16	14	6000	26.7	f-1/16	2	5-1/2	2.5	14	356

### CR-1 – Triple Cylinder

SZEAE8000	N/A	N/A	5/32	4	1/4	6	N/A	N/A	N/A	N/A	N/A	N/A	9/16	14	9000	40.1	f-1/16	2	7-1/2	3.4	16	406
SZEAE8015	3/16	5	3/16	5	1/4	6	1-1/2	38	1-1/4	32	11/16	78	9/16	14	9000	40.1	f-1/16	2	8-1/2	3.9	18-3/4	476

Due to a variety of jobs and applications, Squeeze Riveters are not supplied with rivet sets.

Please contact Sioux Tools, Inc. or your local distributor for rivet set information.

Air Inlet Size: 1/4" NPT • Recommended Hose Size: 3/8" (10 mm) • Performance rated @ 90 psig (6.2 bar) air pressure  
 Parts List • Safety and Instruction Manual • Safety throttle action

**siouxtools.com**



250 Snap-on Drive  
 P.O. Box 1596  
 Murphy, North Carolina USA 28906  
 PH: 828.835.9765  
 FAX: 828.835.9685  
 TOLL FREE: 866.259.7291  
 TOLL FREE FAX: 800.722.7236

Belgium  
 Tel.: 32 (0)14 23 19 67  
 Fax: 32 (0)14 23 26 27  
 Email: Industrial.be@snapon.com

Netherlands  
 Tel.: 31 (0)88 0104000  
 Fax: 31 (0)88 0104010  
 Email: Industrial.nl@snapon.com

Latin America  
 Tel.: 786-254-7765  
 Fax: 786-534-9350  
 e-mail: latinamerica.caribbean@snapon.com

Germany  
 Tel.: 49 2104 9509-0  
 Fax: 49 2104 9509-99  
 e-mail: indus.germany@snapon.com

Italy  
 Tel.: 00 39 02 66 04 53 70  
 Fax: 00 39 02 61 29 78 15  
 e-mail: indus.italia@snapon.com

United Kingdom  
 Tel.: 44 (0) 1536-413904  
 Fax: 44 (0) 1536-413874  
 e-mail: industrialuk@snapon.com

Asia  
 Tel.: 65-6451-5570  
 Fax: 65-6451-5574  
 e-mail: esales.sg@snapon.com

Australia  
 Tel.: 61 2 9837 9100  
 Fax: 61 2 9624 2578  
 e-mail: SOTA.customerservice@snapon.com



Distributed By:



FORM# ZML0142 • Date: 5-24